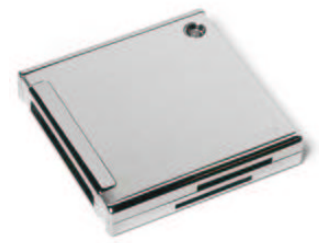


PRODUCT DATA SHEET

Product Name: Metal CardReader
Product No.: 13152MET



13152MET

Brief description:	
	The Metal CardReader is an executive CardReader with brushed metal case in a stylish square design. Simply plug directly into your USB port, insert the card and read and write data to the card like any other drive on your computer.

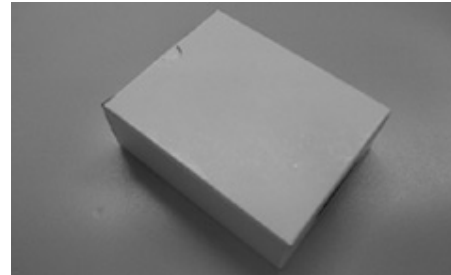
Min. Order Qty:	500 (smaller orders may be possible)
Source:	Custom Order from China
Printed proof lead time:	1-2 weeks
Production lead time:	2-3 weeks
Std colours:	Metal only
MOQ for spec plastics:	N/A
Cards Covered:	MS, MS PRO, MS MG, MS Duo, MS Pro Duo, RS MMC, MINI SD, MA, CF, CFII, SM, XD, MMC, MMC II and SD

Standard connector:	USB2.0 (high speed)
----------------------------	---------------------

Artwork requirements:	
	<ul style="list-style-type: none"> • Editable EPS file • Image saved at 100% size or larger • Pantone® references supplied for colours • Fonts supplied or text saved as curves • Artwork to be emailed with your order number and company name in the reference line or supplied on CD with same information clearly labelled.
	Full detailed guidelines are available for each printing method from our website or on request.

Product Dimensions:	64mm x 64mm x 7mm
Print area:	50mm x 35mm
Print type:	Pad printing or engraving

No. per carton:	100
Carton dimensions:	46cm x 30cm x 36cm
Gross weight:	11Kg
Standard packaging:	White box with blister tray
Packaging dimensions:	94mm x 38mm x 135mm



Pad printed white box:	MOQ 500 + extra charge
Printed 4Cp gift box:	MOQ 500 + extra charge
Tin packaging:	MOQ 500 + extra charge



This model will fit:	Rectangle Tin
-----------------------------	---------------

All information correct at time of production. Whilst we endeavour to maintain the accuracy of this document, details may change without notice.

